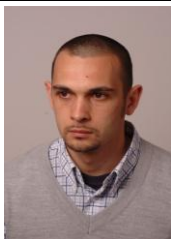




Curriculum vitae Europass



Personal information

First name(s) / Surname(s)	CAMEN DORIN		
Address(es)	GĂRII Street, No. 34, SC.B, ET.1, AP.4, GURAHONȚ CITY, ARAD COUNTY, Country: Romania		
Telephone(s)	0256-424232	Mobile:	0729804714
Fax(es)	0256-424232		
E-mail	camendorin@yahoo.com		
Nationality	Romanian		
Date of birth	23.03.1979		
Gender	male		

Work experience

Occupation or position held	Lecturer, Department of Plant Physiology		
Main activities and responsibilities	Higher education and research activities		
Name and address of employer	Banat's University of Agriculture Science and Veterinary Medicine from Timisoara- Faculty of Horticulture and Forestry, Calea Aradului, no.119, postcode 300645		
Type of business or sector	Educational and research		
Dates	2011 - present		
Occupation or position held	University assistant, Department of Plant Physiology		
Main activities and responsibilities	Higher education and research activities		
Name and address of employer	Banat's University of Agriculture Science and Veterinary Medicine from Timisoara- Faculty of Horticulture and Forestry, Calea Aradului, no.119, postcode 300645		
Type of business or sector	Educational and research		
Dates	2007-2011		
Occupation or position held	PhD Student		
Main activities and responsibilities	Research activities		
Name and address of employer	Banat's University of Agriculture Science and Veterinary Medicine from Timisoara - Faculty of Horticulture and Forestry, Calea Aradului, no.119, postcode 300645		
Type of business or sector	Research and higher education		
Dates	2003-2007		
Occupation or position held	Junior researcher		

Main activities and responsibilities	Research activities
Name and address of employer	University of Szeged, Hungary, Department of Plant Physiology
Type of business or sector	Higher education
Dates	2005-2006
Education and training	
Dates	2009
Title of qualification awarded	Doctor in Sciences/Doctor's degree in Horticulture
Principal subjects/occupational skills covered	Horticulture, Plant physiology, Genetics and breeding, Biotechnology, Biochemistry
Name and type of organisation providing education and training	Banat's University of Agriculture Science and Veterinary Medicine from Timisoara
Dates	2005
Title of qualification awarded	Master/Master's degree
Principal subjects/occupational skills covered	Genetic manipulation of plants, Plant physiology, Biotechnology
Name and type of organisation providing education and training	Banat's University of Agriculture Science and Veterinary Medicine from Timisoara
Dates	2003-2005
Title of qualification awarded	Post university course - Achievements and perspectives in biology
Principal subjects/occupational skills covered	Genetic manipulation of plants, Plant physiology, Biotechnology
Name and type of organisation providing education and training	Banat's University of Agriculture Science and Veterinary Medicine from Timisoara
Dates	2003
Title of qualification awarded	Post university course – Achievements and perspectives in molecular biology
Principal subjects/occupational skills covered	Genetic manipulation of plants, Biotechnology
Name and type of organisation providing education and training	Banat's University of Agriculture Science and Veterinary Medicine from Timisoara
Dates	2004
Title of qualification awarded	Post university course –Modern biotechnology and biosafety
Principal subjects/occupational skills covered	Genetic manipulation of plants, Plant physiology, Biotechnology
Name and type of organisation providing education and training	Banat's University of Agriculture Science and Veterinary Medicine from Timisoara
Dates	1998 - 2003
Title of qualification awarded	Engineer's degree
Principal subjects/occupational skills covered	Horticulture, Genetic engineering
Name and type of organisation providing education and training	Banat's University of Agriculture Science and Veterinary Medicine from Timisoara
Personal skills and competences	
Mother tongue(s)	romanian

Other language(s)	english, french									
Self-assessment	Understanding					Speaking			Writing	
<i>European level (*)</i>	Reading		Spoken interaction		Spoken production		Reading		Spoken interaction	
	B 2	Independent user	B 2	Independent user	B 2	Independent user	B 2	Independent user	B 2	Independent user
	B 2	Independent user	B 2	Independent user	B 2	Independent user	B 2	Independent user	B 2	Independent user
	(*) <i>Common European Framework of Reference for Languages</i>									
Social skills and competences	Communication skills – developed in the teaching and scientific research									
Organisational skills and competences	Team spirit, trust, flexible, active part in discussions, I have the capacity to mobilize colleagues to collaborate, achieve economies of time and respond under pressure									
Technical skills and competences	Servicing equipment in research laboratories of the department of Plant physiology; good command of quality control processes									
Computer skills and competences	Computer operator (Internet, Word, Excel, Power point, etc)									
Driving licence	Category B									
Additional information	<p>Membership of professional bodies:</p> <p>2007 - Multi-disciplinary Research Association from the West Region</p> <p>2007 - Founder of Centre of Consultancy and Euro-Regional Rural Cooperation (CC&EU)</p> <p>2008 - Founder of „Euroregional Research Institute for Vegetal Energetic Bioresources” (BIOEN)</p> <p>Scientific activities:</p> <p>Books: 1 (co-author)</p> <p>Scientific papers: 29</p> <p>Research contracts: 1 project manager and 9 collaborator</p> <p>Certificates and awards:</p> <p>- Biotech Foundation Award, Timisoara, 2002</p>									
Annexes	<p>List of main research grants</p> <p>List of books</p> <p>Representative scientific papers</p>									

List of main research grants

No.	Title	Year	Position	Value	Beneficiary
1.	Morpho-biochemical and molecular characterization of <i>Valeriana officinalis</i> genotypes to identify genotypes with a high yield of essential oil.	2006	Project manager	9.000 RON	CNCSIS
2.	Research regarding the tolerance physiology to osmotic stress of some <i>Phaseolus vulgaris</i> L. local landraces from Banat area in order to use them in	2006-2008	Member	96.000 RON	Contract no.96 GR/11.06.2008, no.theme 11, cod CNCSIS 296, Tip A

	amelioration processes.				
3.	The founding of the Centre for Consultancy and Euro-Regional Rural Co-operation (CC&EU) to improve the ecological and conventional management regarding agricultural yield quality and quantity.	2007-2009	Member	223.000 Euro	PHARE CBC RO-HU 2005/017-536.01.01.01.25
4.	The founding and implementation of the Euroregional research center of vegetal energetic bioresources (BIOEN).	2008-2010	Member	492. 800 EURO	PHARE CBC RO-SE 2006/018-448.01.01.09
5.	Common research project regarding the drought tolerance devise to some maize genotypes cultivated in the western side of Romania and the south-east of Hungary.	2009-2011	Member	452.000 euro	Hungary-Romania Cross-border Co-operation Programme 2007-2013 HURO/0801/167
6.	Postdoc school in the field of agriculture and veterinary medicine.	2010-2013	Member	20.767.995 lei	POSDRU/89/1.5/S/623 71
7.	Doctoral research training (FOR-CE).	2010-2013	Member	8.995.117 lei	POSDRU ID. 80127

List of books

No	Authors	Year	Title	Editors
1.	Carmen Dobrei, R. Sumalan, D. Camen	2007	Forestry Plant Physiology - practical work -	Ed. Eurobit, I.S.B.N. 978-973-620-268-1, Timișoara

Representative scientific papers

Journals not indexed

No.	Title	Authors	Place of publication
1.	The salinity effect considering germinative capacity and free proline content of some <i>Phaseolus vulgaris</i> L. Landraces from Banat area.	Camen D. , Dobrei Carmen, Șumălan R., Velicevici Giancarla, Moșoarcă G.	Association for Multidisciplinary Research of the West Zone of Romania, Proceedings of the IX th International Symposium "Young people and multidisciplinary research", 15-16 XI 2007, pag. 160-163, I.S.S.N. 1843-6609.
2.	The Center of Consultancy and Rural Euro-regional Cooperation – an element of information transfer between agricultural education and production.	R. Sumalan, Carmen Dobrei, S. Gaspar, D. Camen	International Scientific International "Increase of profitability and sustainability of agricultural production in trans – frontier area, PHARE CBC RO 2005/017-536.01.01.01.25, Ed.Eurobit, Timisoara, ISBN 978-973-620-392-3, pag. 7-17, 15.V.2008.
3.	Biofertilizers – viable alternative for	Renata Sumalan, Carmen Dobrei,	International Scientific International "Increase of profitability and sustainability of agricultural

	ecological agriculture practices.	D. Camen , S. Gaspar, R. Sumalan	production in trans – frontier area, PHARE CBC RO 2005/017-536.01.01.01.25, Ed.Eurobit, Timisoara, ISBN 978-973-620-392-3, pag. 87-96, 15.V.2008.
4.	Achievement and perspectives in the employment of vegetal energetic resources.	D. Camen , S. Gaspar, Renata Sumalan, Carmen Dobrei, R. Sumalan	International Scientific International “Increase of profitability and sustainability of agricultural production in trans – frontier area, PHARE CBC RO 2005/017-536.01.01.01.25, Ed.Eurobit, Timisoara, ISBN 978-973-620-392-3, pag. 97-104, 15.V.2008.
5.	Vegetable bioresources – alternative to future energy.	Radu Sumalan, Dorin Camen , Carmen Dobrei, Sorin Gaspar, Alexandru Moisuc	A VIII-a Conferinta Nationala multidisciplinara-cu participare internationala, Stiinta si Inginerie, vol. 14, ISBN 973-8130-82-4, Sebes, 30.V.2008.
6.	Biomass and bioenergy human civilization sustaining element – present and expectation.	Radu Sumalan, Dorin Camen , Carmen Dobrei, Sorin Gaspar, Renata Sumalan, Valeriu Tabara	A VIII-a Conferinta Nationala multidisciplinara-cu participare internationala, Stiinta si Inginerie, vol. 14, ISBN 973-8130-82-4, Sebes, 30.V.2008.
7.	Transformation by means of <i>A. tumefaciens</i> in some varieties of <i>Solanum tuberosum</i> using pBin 35S GUS	Camen D. , Mirela Franțescu, Nedelea G.	Cercetări științifice seria a VIII-a, Biotehnologie și Biodiversitate Facultatea de Horticultură, Timișoara, ISSN 1453-1585, 2004
8.	Preliminary studies concerning the possibility for molecular characterization of some genotypes of <i>Valeriana officinalis</i>	Camen D. , Nedelea G.	Cercetări științifice seria a IX-a, Biotehnologie și Biodiversitate Facultatea de Horticultură, Timișoara, ISSN 1453-1585, 2005
9.	Preliminary study regarding the response of some <i>Valeriana officinalis</i> genotypes at <i>in vitro</i> culture conditions	Camen D. , Nedelea G.	Cercetări științifice seria a X-a, Biotehnologie și Biodiversitate Facultatea de Horticultură, Timișoara, 2006
10.	Oxidative stress antioxidants and total antioxidant activities in vegetables	Erdei Laszlo, Csiszar Jolan,Tari Irma, Bertha Bernadette, Szepesi Agnes, Șulea Diana Corina, Lazăr A., Camen D. , Staicu Mihaela, Petolescu Cerasela, Gabor Laura, Mihacea Sorina, Nedelea G.	Cercetări științifice seria a X-a, Horticultură – Inginerie genetică, Editura Agroprint, Timișoara ISSN 1453-1402, 2006
11.	Germinative response to salt stress conditions in some bean landraces from banat area	Carmen Dobrei, R. Șumălan, Astrid Lăzureanu, D. Camen , G. Moșoarcă	Lucrări științifice Agricoltura Timișoara ISSN 1221 – 5279, 2007
12.	Drought effects	R. Sumalan,	Scientifical Papers, Faculty of Agriculture, XXXIX,

	upon proline and chlorophyll metabolism in oat cultivars (<i>Avena sativa</i> L.).	Carmen Dobrei, D. Camen , G. Mosoarca	Partea a II-a, p. 519-524, Editura Agroprint, Timisoara, 2007, ISSN 1221-5279., 2007
--	---	--	--

Journals indexed BDI

No.	Title	Authors	Place of publication
1.	Drought effects upon proline and chlorophyll metabolism in oat cultivars (<i>Avena sativa</i> L.).	R. Sumalan, Carmen Dobrei, D. Camen , G. Mosoarca	Scientifical Papers, Faculty of Agriculture, XXXIX, Partea a II-a, p. 519-524, Editura Agroprint, Timisoara, 2007, ISSN 1221-5279.
2.	Germinative response to salt stress conditions in some bean landraces from Banat area.	Carmen Dobrei, R. Sumalan, Astrid Lazureanu, D. Camen , G. Mosoarca	Scientifical Papers, Faculty of Agriculture, XXXIX, Partea a II-a, p. 535-538, Editura Agroprint, Timisoara, 2007, ISSN 1221-5279.
3.	The influence of salt stress conditions in germinative response and proline analysis of some bean landraces from Banat area.	Dobrei Carmen, Camen D. , Şumălan R., Velicevici Giancarla	Analele Universităţii din Craiova, Agricultură, Montanologie, Cadastru, vol. XXXVII/A Simpozion omagial "60 ani de învăţământ superior agronomic în Oltenia", pag. 571-574, ISSN 1841-8317, 22-23 XI 2007.
4.	EFFECT OF OSMOTIC STRESS ON LEAF AREA AND CLOROPHYLL CONTENT OF SOME BEAN (<i>PHASEOLUS VULGARIS</i> L.) LOCAL LANDRACES FROM BANAT AREA.	BEINŞAN CARMEN, ŞUMĂLAN R., CAMEN D. , BABĂU MARIANA, Radulov Isidora, Berbecea Adina	ANALELE UNIVERSITATII DIN CRAIOVA-SERIA AGRICULTURA, MONTANOLOGIE, CADASTRU, Faculty of Agriculture, The Scientific Conference with International Participation "Durable Agriculture – Agriculture of the Future", Craiova, ISBN 978-606-510-301-6, pag. 84-87, 28-29.11. 2008.
5.	STUDY OF NODULATION CAPACITY AND EFFICACY OF SOME NATIVE AND SELECTED BRADYRHIZOBIUM LUPINII STRAINS.	ŞUMĂLAN RENATA, SCHMIDT BRIGITTA, SUMĂLAN RADU, BEINŞAN CARMEN, CAMEN DORIN	ANALELE UNIVERSITATII DIN CRAIOVA-SERIA AGRICULTURA, MONTANOLOGIE, CADASTRU, Faculty of Agriculture, The Scientific Conference with International Participation "Durable Agriculture – Agriculture of the Future", Craiova, ISBN 978-606-510-301-6, pag. , 28-29.11. 2008.
6.	THE INFLUENCE OF FERTILIZATION UPON SPECIFIC LEAF AREA (SLA), LEAF AREA INDEX (LAI), LEAF AREA RATION (LAR) AND DRY MATTER CONTENT IN SOME MAYZE (<i>ZEAMAYS</i> L.) HYBRYDS CULTIVATED IN BANAT AREA.	ŞUMĂLAN R., CAMEN D. , BEINŞAN CARMEN, ŞUMĂLAN RENATA, SCHMIDT BRIGITTA, POPESCU IOANA, GAŞPAR S., BABĂU MARIANA	ANALELE UNIVERSITATII DIN CRAIOVA-SERIA AGRICULTURA, MONTANOLOGIE, CADASTRU, Faculty of Agriculture, The Scientific Conference with International Participation "Durable Agriculture – Agriculture of the Future", Craiova, ISBN 978-606-510-301-6, pag. , 28-29.11. 2008.
7.	Research regarding the osmotic stress tolerance of some bean	Dobrei Carmen, Sumalan R.,	Cercetari stiintifice, seria a XII-a, Horticultura si Inginerie

	(<i>Phaseolus vulgaris</i> L.) local landraces from Banat area.	Camen D. , Berbecea Adina, Radulov Isidora, Velicevici Giancarla, Babau Mariana	genetica,Ed.Agroprint Timisoara, ISSN 1453-1402, pag. 116-118, 15.V.2008.
8.	Research regarding the influence of some unfavorable environmental factors in <i>Phaseolus vulgaris</i> L. landraces from Banat area.	Dobrei Carmen, Camen D. , Sumalan R.	Lucrări şt. Universitatea „Politehnica” Timișoara, Facultatea de Chimie Industrială și Ingineria Mediului, Simpozionul „Environmental Protection and Ecological Education”, Editia a II-a, 05.06.2008, Timisoara, CD.
9.	Physiological responses of Banat's common bean landraces (<i>Phaseolus vulgaris</i> L.) seedlings to osmotic stress.	C.Dobrei, R.Sumalan, D. Camen , G. Velicevici, R. Sumalan, M.Babau, G.Mosoarca	Lucrari stiintifice, U.S.A.M.V.B., Horticultura, seria B, vol. LI, ISSN 1222-5312, Bucuresti, pag. 551-554, 23.V.2008.
10.	The fertilization influence on the beans chemical compositions of some cultivated hybrids maize in Banat area.	Radu Sumalan, Carmen Beinsan, Dorin Camen , Renata Sumalan, Brigitta Schmidt, Ioana Popescu, Sorin Gaspar	Research Journal of Agricultural Science, vol. 41 (1), Agroprint Editorial, Timisoara, ISSN 2066-1843, 2009, pag.511-513.
11.	Influence of salt stress on some local landraces bean (<i>Phaseolus vulgaris</i> L.) photosynthesis and transpiration rate.	Beinsan Carmen, Camen D. , Sumalan R., Schmidt Brigitta, Popescu Ioana	Journal of Horticulture, Forestry and Biotechnology, vol.13, ed. Agroprint Timisoara, ISSN 2066 – 1797, 2009, pag. 204-207.
12.	Researches regarding the physiology of tolerance to osmotic stress of some local landraces of <i>Phaseolus vulgaris</i> L. from Banat area.	Carmen Beinsan, Dorin Camen , Radu Sumalan	Bulletin of University of Agricultural sciences and Veterinary Medicine Cluj Napoca, Horticulture, volume 66 (1), Print ISSN 1843-5254, Electronic ISSN 1843-5394, 2009, pag. 389-396.
13.	Research on the effect of arbuscular mycorrhizae on some physiological indices of lettuce – <i>Lactuca sativa</i> L.	Camen D. , Beinsan Carmen, Șumălan R., Pasc Mironela	Journal of Horticulture, Forestry and Biotechnology, vol.14(3), 128-130,2010, ISSN 2066-1797. http://www.cabi.org
14.	Research concerning the efficacy and nodulation capacity of some selected Rhizobia strains with specificity for lupin and bean plants.	Renata Maria Șumălan, Carmen Beinsan, Dorin Camen , Radu Șumălan, Ancuta Doncean	International Symposium „Trends in the european agriculture development, Faculty of Agriculture, Timișoara, Researches in Biology with implications in the Agricultural Sciences, pag.310-313, vol. 42 (2) 1 – 341 (2010), ISSN: 2066-1843, 20-21.05.2010. http://www.copernicus.org
15.	Study concerning the fertilization effect upon quality of beans in some cultivated hybrids maize in Banat area.	Dorin Camen , Radu Șumălan, Carmen Beinsan, Renata Șumălan, Brigitta Schmidt, Ioana Popescu, Sorin Gașpar	International Symposium „Trends in the european agriculture development, Faculty of Agriculture, Timișoara, Researches in Biology with implications in the Agricultural Sciences, vol.42 (3) 1-908 (2010), ISSN: 2066-1843, 20-21.05.2010.

			http://www.copernicus.org
16.	Research regarding the influence of storage conditions in quality of some apple varieties.	Camen D. , Beinșan Carmen, Nicolae I., Șumălan Renata, Doncean Ancuța, Șumălan R.	Journal of Horticulture, Forestry and Biotechnology Timisoara, vol.15(1), pag.196-198, ISSN 2066-1797, 2011.
17.	Study of fungal load of pome fruits, hazardous factor for quality maintaining and ensuring the consumer safety.	Șumălan Renata Maria, Doncean Ancuța, Șimonea Luciana, Șumălan R., Camen D. , Beinșan Carmen	Journal of Horticulture, Forestry and Biotechnology Timisoara, vol.15(2), pag.147-151, ISSN 2066-1797, 2011.

- International conferences

No.	Title	Authors	Place of publication
1.	Studies regarding tailings pond water derived from mining activities over <i>Hordeum vulgare</i> L. Germination influence.	Carmen Dobrei, G.Mosoarca, R.Sumalan, D.Camen , P.Negrea, Adina Negrea, Lavinia Lupa	Research people and actual task on multidisciplinary sciences, First Conference, 6-8 June 2007, Lozenec, Bulgaria, volume 1, p.71-75, ISBN 978-954-91147-3-7.
2.	Research on the biodiversity of the local bean cultivars (<i>Phaseolus vulgaris</i> L.) present in the Banat area in the view of their utilization in breeding programs.	Sumalan R., Carmen Dobrei, D.Camen , Adina Berbecea, Isidora Radulov, Renata Sumalan, Mariana Babau, G.Mosoarca	First Symposium on Horticulture in Europe, International Society for Horticultural Science, Vienna, Austria, pag.270, ISSN 1996-9449, 17-20 II 2008.
3.	Salinity tolerance in some <i>Phaseolus vulgaris</i> L. Landraces from the Banat area.	R.Sumalan, D. Camen , Carmen Dobrei	Proceedings.43 rd Croatian and 3 rd International Symposium on Agriculture, Opatija, Croatia, pag.371-374, 18-21 II 2008.
4.	Study concerning salt stress effect on leaf area dynamics and chlorophyll content in four bean local landraces from Banat area.	Carmen Beinșan, Dorin Camen , Radu Sumalan, Mariana Babau	44 th Croatian and 4 th International Symposium on Agriculture, Faculty of Agriculture, Opatija, Croatia, 16-20 february, ISBN 978-953-6331-67-3, 2009, pag. 416-419.
5.	Study regarding the influence of saline stress on transpiration's intensity and leaf area of some <i>Phaseolus vulgaris</i> L. landraces from Banat area.	Carmen Beinșan, D. Camen , R. Sumalan, Brigitta Schmidt, Ioana Popescu	Proceedings of the Second International Conference, Bulgarian National Multidisciplinary Scientific Network of the Professional Society for Research work, volume 1, Lozenec, Bulgaria, 10-12 june, ISSN 1313-7735, 2009, pag. 252-255.
6.	Maize bioproductivity in the context of the climate changes –	Șumălan R.L., Carmen Beinșan, Renata Șumălan, D.Camen , S.Gășpar, S.Ciulcă	3 rd International Seminar „Crop Science for Food Security, Bioenergy and Sustainability”, 1-3.06.2010, Szeged, Hungary. http://sites.google.com/site/3rdifsdaseminar

	present and perspectives -		
7.	Studies regarding tailing pond water derived from mining activities over <i>Hordeum vulgare</i> L. germination influence	Carmen Dobrei, R. Şumălan, D. Camen , G. Moşoarcă	Research people and actual tasks on multidisciplinary sciences, Lozenec, Bulgaria, 2007

- ISI Journals

No.	Authors	Year	Title	Place of publication, impact factor
1.	Tari, Irma; Camen, D. ; Coradini, Giancarla; Csiszar, Jolan; Fediuc, Erika; Gemes, Katalin; Lazar, A.; Madosa, E.; Mihacea, Sorina; Poor, P.; Postelnicu, Simona; Staicu, Mihaela; Szepesi, Agnes; Nedelea, G.; Erdei, L	2008	Changes in chlorophyll fluorescence parameters and oxidative stress responses of bush bean genotypes for selecting contrasting acclimation strategies under water stress	ACTA BIOLOGICA HUNGARICA, 59 (3), pp. 335-345 Impact factor: 0.179
2.	Carmen Beinsan, Giannin Mosoarca, Radu Sumalan, Dorin Camen , Petru Negrea, Adina Negrea	2009	Studies regarding tailings pond seepage water from mining activities over <i>Avena sativa</i> L. Germination influence.	Notulae Botanicae Horti Agrobotanici Cluj Napoca, Print ISSN 0255-965X; Electronic ISSN 1842-4309, Not.Bot.Hort.Agrobot Cluj 37(1) 2009. impact factor 0.463.